

2016 PRODUCT CATALOG



**SHADOW
HUNTER**
PROFESSIONAL GRADE HUNTING BLINDS



PROFESSIONAL GRADE


Two decades worth of relentless dedication, sourcing heavy duty materials and employing meticulous construction – that’s what it means to invest in a Shadow Hunter® blind. That’s what it takes to become the #1 brand preferred by industry leading Pros and Sportsmen. And that’s what it means to build a brand you can count on – Shadow Hunter won’t let you down when it matters most.

All Shadow Hunter models are built to last from the outside in with commercial grade aluminum exteriors. Our blinds are engineered using industry leading state of the art construction methods that maximize structural integrity and tolerances for extreme durability. New designs feature one and two-piece aluminum roofs and exterior wall panels assembled with a minimal amount of fasteners for fewer voids and employ a waterproof, rodent resistant floor with acrylic, to eliminate penetration.

Innovation that let’s you hunt like a Pro, the Silent Window Shield System further protects your vantage point by ensuring that scent and sound are contained. Blinds are available in a wide variety of sizes and window configurations featuring our NEW 2-in-1 Rotational Window System that allows one person to convert from gun to archery in short order! Plus, our NEW total comfort systems include accessory and upgrade options like gun and bow mounts, commercial grade noise dampening flooring, modular shelving, gun rests, top grade window screening and more.

Finish off by getting even further ahead of the game and put your blind up off the ground with our versatile patented Elevators™ bracket system. You can now get up and down quicker and safer with the NEW Shadow Hunter Adjustable Ladder/Platform kit too.

TOTAL COMFORT HUNTING



Comfortable, silent, warm and customizable - from the do-it-yourself Outdoorsman Series to the custom Outfitter Series, all of our blinds feature a 6'-5" peaked roof line and doors that start at 34" wide and at least 6'-5" tall. There's plenty of room to share the hunt and the memories with a partner in a Shadow Hunter blind. They are carefully designed to accommodate all types of firearm, archery and crossbow hunting with additional space and larger window openings to allow for more optimal shooting. Each blind is fully insulated, minimizing the need for excess cold weather gear and extends the hunting season. Constructed with high quality materials and built to stand up to the toughest conditions, Shadow Hunter blinds promise to keep you comfortable so you can stay focused on the reason you're in there to begin with.

Hear it from the **PROS...**



"The Shadow Hunter Blinds allow me to stay warm, dry, and scent-free on those cold and nasty days."

- Kenneth Lancaster

"The Nugent family has sat in deer blinds forever around the world. There is no question that the Shadow Hunter Blinds are the very best anywhere."

- Ted Nugent



"Shadow Hunter's blinds are perfect for me because I like to film my hunts with my kids and family. They're always quiet and comfortable and I can get the video I need."

- Tim Wells

"It is doubtful I would have been able to arrow this North Dakota whitetail deer had it not been for the Shadow Hunter blind. My Shadow Hunter blind enabled me to stay out of the wind and sit comfortably for hours."

- Tom Nelson



"Shadow Hunter makes the best enclosed hunting blinds in the world... period."

- Steve Gruber

I wanted to thank you again for working with Matt and I to put together our order of 3 Shadow Hunter blinds. We were able to put the blinds to great use in Illinois last week on our late season Wounded Hero hunt! Our guys loved hunting from the blinds.

- Jeremy Harbaugh President, WHHC



OUTDOORSMAN S E R I E S

DO IT YOURSELF KIT BLINDS

Our most versatile blind that is perfect for hunters of all experience levels, the **Outdoorsman Series** kit blinds are quick and easy to assemble.* These kits ship easily in a crate and are the perfect solution for getting out to those hard to reach hunting spots. Rest assured, these models still employ the same great quality that you would expect from any Shadow Hunter blind. The standard **Outdoorsman's** features include structurally engineered all aluminum fully insulated exterior walls, wall-to-wall carpeting, peaked roofs, rodent proof flooring, interior shelving, upper and lower ventilation, and the advanced Shadow Hunter Silent Window System with patented Speed Cinch®. All blinds feature oversized 40" x 65.75" doors** and increased window openings. Also our kits can be fully assembled for an additional fee.

All Shadow Hunter **Outdoorsman Series** blinds feature the new innovative 24.5" x 8" Rotational Window System.*** Designed to change with the seasons, the advanced quick release frame provides the ability for one person to rotate window openings 90° in a matter of minutes. In the archery position, windows are now offset 2" to accommodate left or right handed hunters for improved visibility.

* OD550C & OD660C only available pre-assembled. ** Except for the OD550C & OD660C.

*** Except for the OD44GK

+ KIT BLINDS

OUTDOORSMAN SERIES KIT BLINDS are the PREFERRED HUNTING BLIND SOLUTION for all hunters. Constructed from only the highest quality materials available, OUTDOORSMAN SERIES KIT BLINDS ensure maximum quality and comfort. Optional accessory packages are available.



Rotational Window



Corner Shelf



Kit Crates

STANDARD FEATURES

- Fully Insulated Walls & Ceilings
- Wood Grain Aluminum
- Rust Proof Exterior*
- Carpeted Floor for Noise Reduction
- Commercial Grade Water Proof Floor Coating*
- Shadow Hunter ODX™ Camo
- Shadow Hunter Silent Rotational Window System*
- Upper and Lower Air Vents
- Large Interior Storage Shelf
- Double Coat Hook*
- Interior Peak Height 77"*
- Interior/Exterior Door Handle*

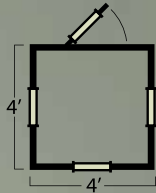
* **NEW** for 2016

EXTERIOR PATTERN

Shadow Hunter ODX™ Camo

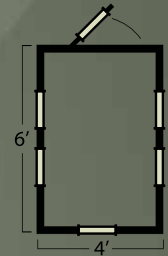


Speed Cinch® is a registered trademark of Speed Cinch Inc.



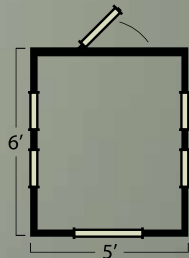
OUTDOORSMAN
SERIES **4X4 GUN BLIND OD44GK**

This one-person blind is perfect for gun hunters that want to have more than one blind on their property. It is very portable and perfect for hard-to-reach locations. Comes standard with FOUR 24.5" x 8" Shadow Hunter Silent Gun Windows.



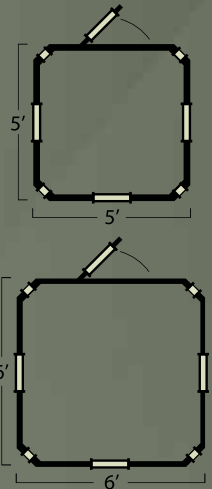
OUTDOORSMAN
SERIES **4X6 COMBO BLIND OD46CK**

A one or two person combo blind that is great for all types of hunting. This is one of the more popular sizes as it conveniently fits right into a standard full-size pickup truck bed. Very flexible for bow and gun hunters, this model comes standard with SIX 24.5" x 8" Shadow Hunter Silent Gun/Archery Rotational Windows and ONE corner shelf.



OUTDOORSMAN
SERIES **5X6 CROSS BOW® COMBO BLIND OD56GK**

A multi-person combo blind can be used for all types of hunting, the OD56GK features oversized windows and is ideal for archery and crossbow hunting. Comes standard with TWO 34" x 10" Gun/Cross Bow Windows plus FOUR 24.5" x 8" Shadow Hunter Silent Gun/Archery Rotational Windows and ONE corner shelf.



OUTDOORSMAN PRE-ASSEMBLED
SERIES **5X5 & 6X6 OCTAGON COMBO BLIND OD550C or OD660C**

These multi-person octagon blinds are optimized for all types of hunting. They feature 360° shooting with corner windows (now with rotational windows) and can be set up as an all archery blind. Quickly becoming one of our most popular blinds, they come standard with FOUR 24.5" x 8" Shadow Hunter Silent Gun/Archery Rotational Windows; plus FOUR 8" x 24.5" Shadow Hunter Silent Archery Windows and ONE versatile 2-in-1 shelf system.

MARKSMAN S E R I E S

PREMIUM PRE-ASSEMBLED BLINDS

Now using advanced building materials for improved quality, this pre-assembled blind is comfortable, durable and offers more standard features and options. The **Marksman Series** is the continuation of a true Shadow Hunter legacy as our most popular series.

The **Marksman Series'** standard features include structurally engineered all aluminum fully insulated exterior walls, wall-to-wall carpeting, peaked roofs, rodent proof flooring, interior shelving, upper and lower ventilation, and our advanced Shadow Hunter Silent Window System with patented Speed Cinch. All of our blinds feature oversized 40" x 65.75" doors and increased window openings.*

All Shadow Hunter **Marksman Series** blinds feature the new 24.5" x 8" Rotational Window System.** Designed to change with the seasons, the advanced quick release frame provides the ability to rotate window openings 90° in a matter of minutes. In the archery position, windows are now offset 2" to accommodate left or right handed hunters for improved visibility.

* Except for the MM550C and MM660C. ** Except for the MM660G

++ PREMIUM PRE-ASSEMBLED BLINDS

MARKSMAN SERIES is the PREFERRED HUNTING BLIND SOLUTION that offers more standard features. Including more add-ons, as well as, the highest quality materials to ensure maximum quality and comfort.



Rotational Window



Crossbow Shooting Rail



Versatile 2 in 1
Shelf System

STANDARD FEATURES

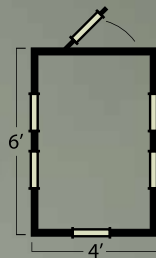
- Fully Insulated Walls & Ceilings
- Wood Grain Aluminum
- Rust Proof Exterior*
- Carpeted Floor for Noise Reduction
- Commercial Grade Water Proof Floor Coating*
- Shadow Hunter MMX™ Camo*
- Shadow Hunter Silent Rotational Window System*
- Upper and Lower Air Vents
- Large Interior Storage Shelf
- Double Coat Hook*
- Interior Peak Height 77"*
- Interior/Exterior Door Handle*
- Universal Firearm/Compound Bow Holder*

* **NEW** for 2016

EXTERIOR PATTERN

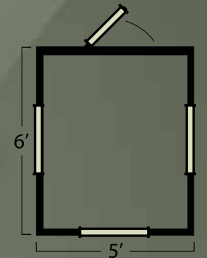
Shadow Hunter MMX™ Camo*





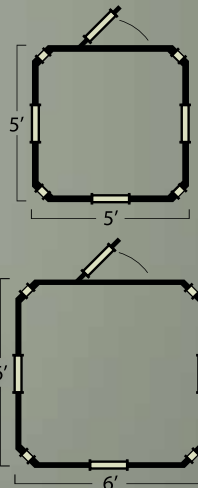
MARKSMAN
SERIES **4X6 COMBO BLIND MM46C**

This one or two person combo blind is great for all types of hunting. This is one of the more popular sizes as it conveniently fits right into a standard full-size pickup truck bed. The MM46C is very flexible for bow and gun hunters and comes standard with SIX 24.5" x 8" Shadow Hunter Silent Gun/Archery Rotational Windows and TWO corner shelves.



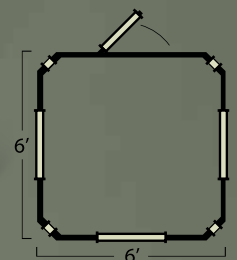
MARKSMAN
SERIES **5X6 GUN/CROSS BOW® BLIND MM56G**

A multi-person blind is perfect for 2 to 3 hunters. It is exceptional for gun/crossbow hunting and features oversized windows and door. The MM56G comes standard with FOUR 34" x 10" Shadow Hunter Silent Gun/Cross Bow Windows with shooting rails and TWO corner shelves.



MARKSMAN
SERIES **5X5 & 6X6 OCTAGON COMBO
BLIND MM550C or MM660C**

These multi-person octagon blinds are optimized for all types of hunting. They features 360° shooting with corner windows (now with rotational windows) and can be set up as an all archery blind. Quickly becoming one of our most popular blinds, they come standard with FOUR 24.5" x 8" Shadow Hunter Silent Gun/Archery Rotational Windows; plus FOUR 8" x 24.5" Shadow Hunter Silent Archery Windows and ONE versatile 2-in-1 shelf system.



MARKSMAN
SERIES **6X6 OCTAGON GUN/CROSS BOW®
BLIND MM660G**

Our octagon gun/crossbow blind is one of our largest blinds and is perfect for multiple hunters. It features 360° shooting with corner windows and is ideal for all types of hunting. The MM660G comes standard with FOUR 34" x 10" Shadow Hunter Silent Gun/Cross Bow Windows with shooting rails; plus FOUR 8" x 24.5" Shadow Hunter Silent Archery Windows and ONE versatile 2-in-1 shelf system.

OUTFITTER S E R I E S

CUSTOM BLINDS

Our **Outfitter Series** blinds are large enough to fit 2-3 hunters and are fully customizable. If you can dream it we can build it. Shadow Hunter is one of the few blind manufacturers that allow you to customize your own blind and we love doing it. You can customize your **Outfitter Series** blind to fit your preferences with more windows, larger floor plans, exterior finish, larger doors and other upgrade options. Contact Shadow Hunter or your local dealer to find out how we can make your blind all about you.

The **Outfitter Series'** standard features include structurally engineered all aluminum fully insulated exterior walls, TPO noise dampening flooring, peaked roofs, rodent proof flooring, interior shelving, upper and lower ventilation, and the advanced Shadow Hunter Silent Window System with patented Speed Cinch. All of these blinds feature oversized 40" x 65.75" doors and increased window openings.*

* Except for the OF550C

+++ CUSTOM BLINDS

OUTFITTER SERIES is our HIGHEST QUALITY PREMIUM SOLUTION HUNTING BLIND, including the most standard features, options and add-ons that you'll find, as well as, the highest quality materials to ensure maximum quality and comfort.



Rotational Window



Crossbow Shooting Rail



Interior Shelves

STANDARD FEATURES

- Fully Insulated Walls & Ceilings
- Wood Grain Aluminum
- Rust Proof Exterior*
- TPO Noise Dampening Flooring*
- Commercial Grade Water Proof Floor Coating*
- Shadow Hunter MMX™ Camo*
- Upper and Lower Air Vents
- Large Interior Storage Shelf
- Double Coat Hook*
- Interior Peak Height 77"*
- Interior/Exterior Door Handle*
- Universal Firearm/Compound Bow Holder*

AVAILABLE UPGRADES

- Carpeted Walls
- Peek Window
- Additional Windows
- Adhesive Window Screen*
- Adjustable Window Heights
- Exterior Pattern Options*
- Larger Doors*
- Larger Floor Plans*
- Firearm Holders and Rests*

* **NEW** for 2016

EXTERIOR PATTERNS

Shadow Hunter ODX™ Camo

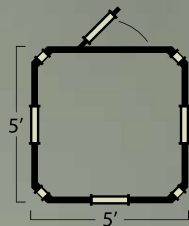


Shadow Hunter MMX™ Camo*



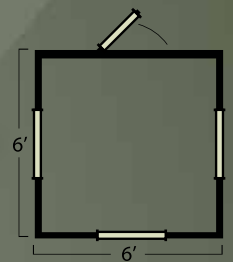
Shadow Hunter OFX™ Clay Stucco





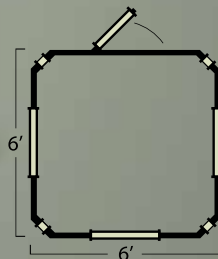
OUTFITTER SERIES CUSTOM ASSEMBLED
5X5 OCTAGON COMBO BLIND OF550C

A multi-person octagon blind that is optimized for all types of hunting. It features 360° shooting with corner windows (now with our rotational windows) and can be set up as an all archery blind. Quickly becoming one of our most popular blinds, it comes standard with FOUR 24.5" x 8" Shadow Hunter Silent Gun/Archery Rotational Windows; plus FOUR 8" x 24.5" Shadow Hunter Silent Archery Windows and ONE versatile 2-in-1 shelf system.



OUTFITTER SERIES CUSTOM ASSEMBLED
6X6 GUN/CROSS BOW® BLIND OF66G

This multi-person blind is our largest and is perfect for 2 to 3 hunters. It is exceptional for gun/crossbow hunting and features oversized windows and door. The OF66G comes standard with FOUR 34" x 10" Shadow Hunter Silent Gun/Cross Bow Windows with shooting rails, ONE versatile 2-in-1 shelf system and TWO corner shelves.



OUTFITTER SERIES CUSTOM ASSEMBLED
6X6 OCTAGON GUN/CROSS BOW® BLIND OF66OG

Our octagon gun/crossbow blind is one of our largest blinds and is perfect for multiple hunters. It features 360° shooting with corner windows and is ideal for all types of hunting. The OF66OG comes standard with FOUR 34" x 10" Shadow Hunter Silent Gun/Cross Bow Windows with shooting rails; plus FOUR 8" x 24.5" Shadow Hunter Silent Archery Windows and ONE versatile 2-in-1 shelf system.

CUSTOM BLIND EXAMPLES



LADDER/PLATFORM KIT



NEW

ADJUSTABLE LADDER/PLATFORM KIT SH33PL

NEW Adjustable Ladder/Platform kit is designed to bolt up to any elevated platform made of dimensional lumber or Shadow Hunter blind. The kit is adjustable from 5 to 10 feet and is constructed of rugged powder coated steel oval tubing for extreme integrity and durability. Installation hardware is included.

WINDOW KITS

ARCHERY SILENT WINDOW KIT SYSTEM SHSSFW

This flip window kit includes two 8" x 24.5" Silent Shadow Window systems and contains all of the parts to build the same Archery windows found in every Shadow Hunter Blind.



GUN SILENT WINDOW KIT SYSTEM SHSSGW

This kit includes two 24.5" x 8" horizontal Silent Shadow Window systems and contains all of the parts to build the same Gun windows found in every Shadow Hunter Blind.



Cross Bow® SILENT WINDOW KIT SYSTEM SHSSCBW

This kit includes one 34" x 10" horizontal Silent Shadow Window system and contains all of the parts to build the same crossbow windows found in every Shadow Hunter Blind.



MADE TO BUILD
ELEVATORS
BUILT TO LAST

4 X 4 COMPOUND ANGLE E1088

Most commonly used to raise hunting blinds, build playhouses, swing sets, lifeguard stands, picnic tables, and any other kind of platform that requires 4x4 legs for bearing heavier loads, and double pre-set angles for side-to-side stability.



2 X 4 COMPOUND ANGLE E2488

Most commonly used to raise platforms such as playhouses, picnic tables, and benches. Helps you raise smaller structures that don't need a full 4x4 for vertical support, and the double pre-set angles give you full side-to-side stability.



Other Elevator SKUS available on our website.

Which blind is best for you?



	OUTDOORSMAN S E R I E S					MARKSMAN S E R I E S					OUTFITTER S E R I E S		
	OD446K	OD46CK	OD566K	OD550C	OD660C	MM46C	MM56G	MM550C	MM660C	MM660G	OF550C	OF66G	OF660G
Do you prefer to bow hunt?			X	X	X	X	X		X	X	X		X
Do you prefer to gun hunt?	X	X	X	X	X	X	X	X	X	X	X	X	X
Do you prefer to hunt with a Crossbow?			X	X	X		X	X	X	X	X	X	X
How many people do you usually hunt with?	1	1-2	2-3	2-3	2-3	1-2	2-3	2-3	3-4	3-4	2-3	3-4	3-4
Do you have a budget in mind?	\$	\$	\$\$	\$\$	\$\$\$	\$	\$\$	\$\$	\$\$\$	\$\$\$	\$\$\$	\$\$\$	\$\$\$
Do you hunt in a hard to reach location?	Kit Blind	Kit Blind	Kit Blind										

Standard Features & Available Options:

	OUTDOORSMAN S E R I E S	MARKSMAN S E R I E S	OUTFITTER S E R I E S
STANDARD FEATURES	Fully Insulated Walls & Ceilings	X	X
	Wood Grain Aluminum Exterior	X	X
	Carpeted Floor	X	X
	TPO Noise Dampening Flooring		
	Commercial Grade Waterproof Floor Coating	X	X
	1 Color ODX Camo	X	
	2 Color MMX Camo		X
	Silent Rotational Window System	X	X
	Upper & Lower Vents	X	X
	Large Interior Storage Shelf	X	X
	Double Coat Hook	X	X
	Interior Peak Height 77"	X	X
	Interior/Exterior Door Handle	X	X
	Universal Firearm/Bow Holder	X	X
OPTIONS	Carpet 12" Up Walls		X
	Peek Window		X
	Additional Windows		X
	Adhesive Window Screen	X	X
	Adjustable Window Heights		X
	Exterior Pattern Options		X
	Larger Doors		X
	Larger Floor Plans		X
Firearm Holders and Rests	X	X	



**THE PREFERRED HUNTING BLIND SYSTEM, USED BY PROS AND SPORTSMEN EVERYWHERE
PROUDLY MADE IN THE U.S.A. 🇺🇸**

**SUMMIT
OUTDOORS LLC**

1 (888) 446-4868

shadowhunterblinds.com